

TRACY KRUMM ▶ Kansas City, Missouri USA

Chiaroscuro Contemporary Art



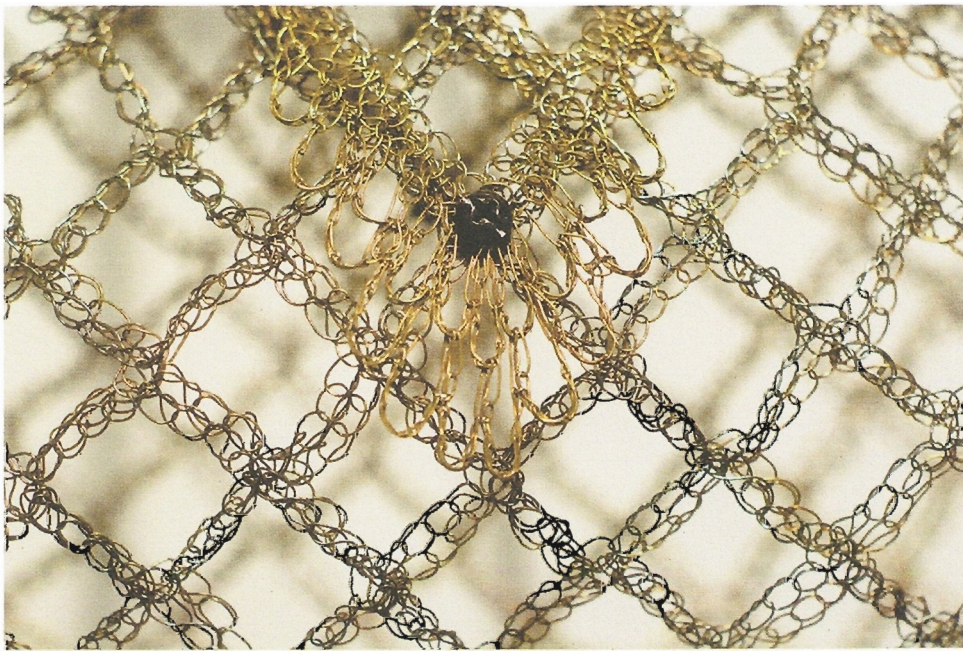
Tracy Krumm's sculptures are informed by the histories of sculpture and women's work. For generations, blacksmithing and crochet have been viewed as gender-specific. Yet this artist does more than display virtuosity with both processes; she confronts and questions issues of balance, power, social class, relationships and conventional notions of beauty. Her physical components are endowed with specific aesthetics and historical connotations though deeper meanings remain open to interpretation. The artist's diaphanous textiles—while crocheted in lighter metals—appear to influence and even sway the sculptural impact of the heavy metal armatures they touch.

My approach to art-making intertwines process and product to integrate remnants of time, culture, personal history and environment. This engages me in a continually evolving dialogue with research on feminism, social practice, popular culture, and the exploration of how the transcendental possibilities of repetitive processes lead to and influence creative experience. These sculptures also speak about the history of craft in their attention to detail, and about how structural and material explorations serve my ability to accommodate and transform the physical and conceptual substance of my work.

Tracy Krumm



Tracy Krumm; *Shield (Dickey)*; crocheted and fabricated metal; copper and fine silver wire, forged steel, found objects, patina, resin, lacquer; 17 x 15 x 4" (42.5 x 37.5 x 10cm); photo: courtesy of the artist.

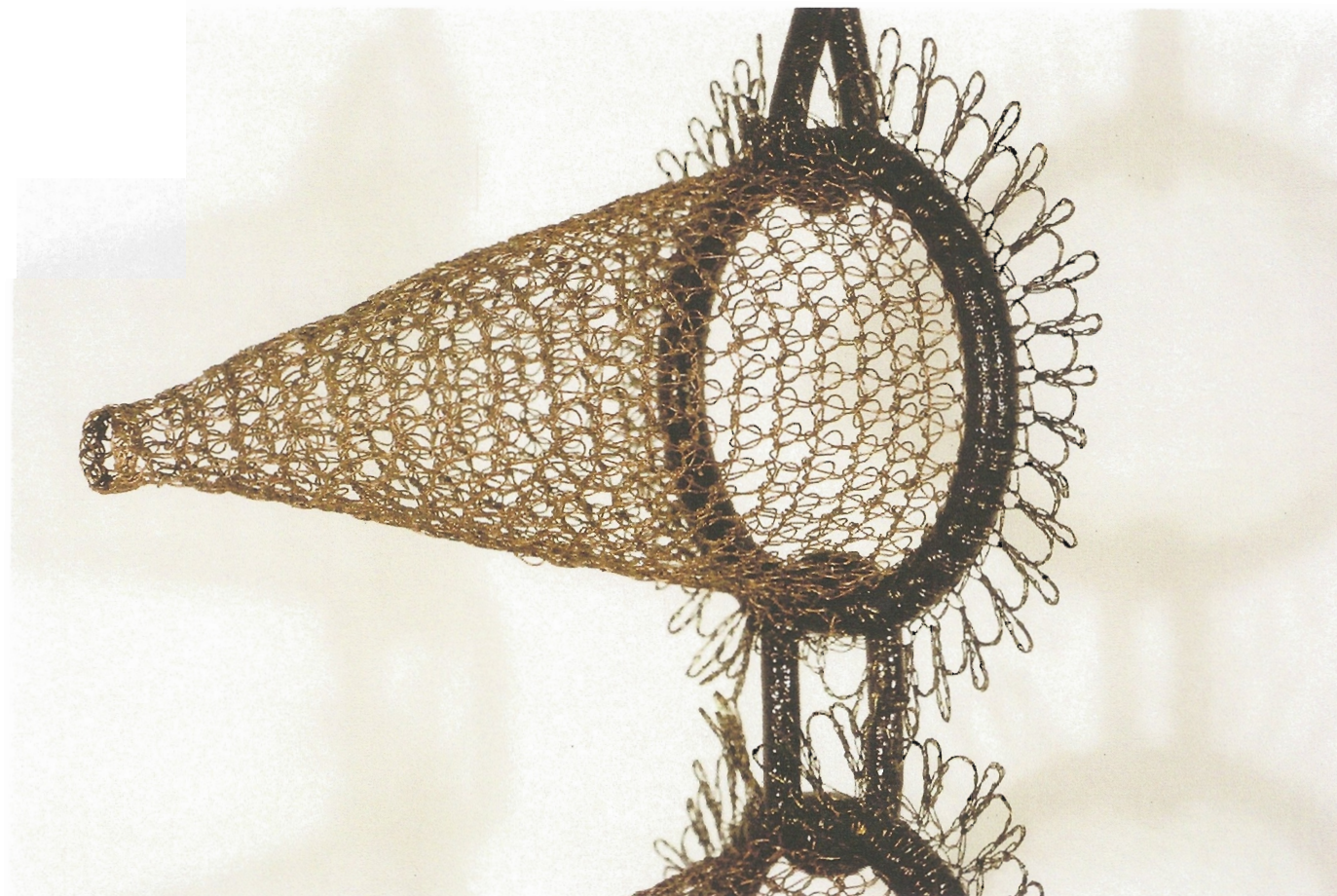


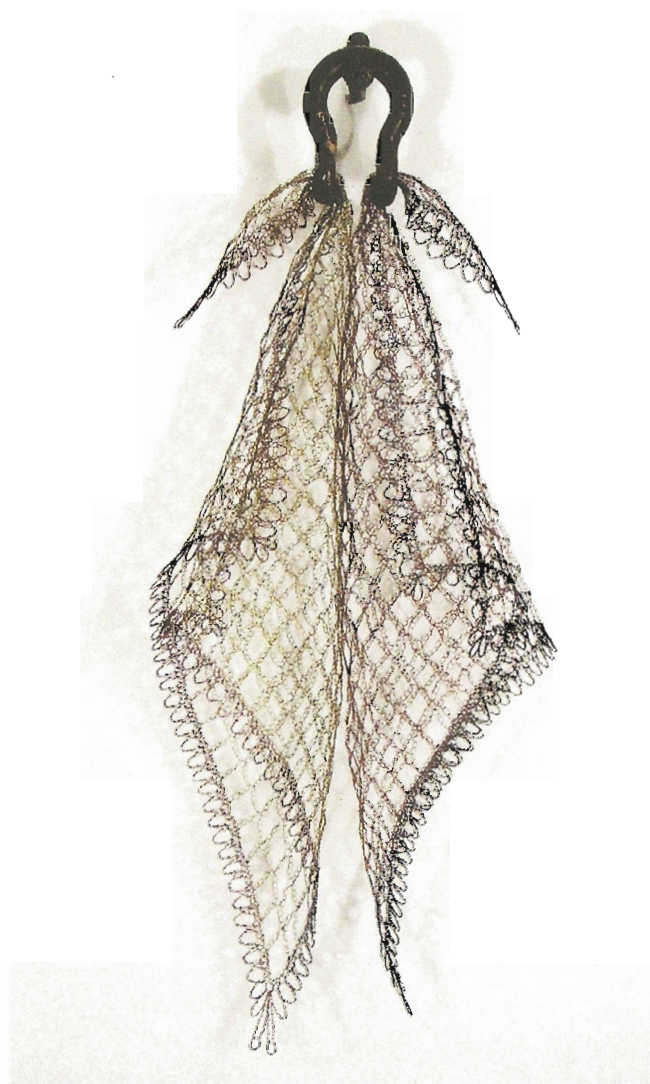
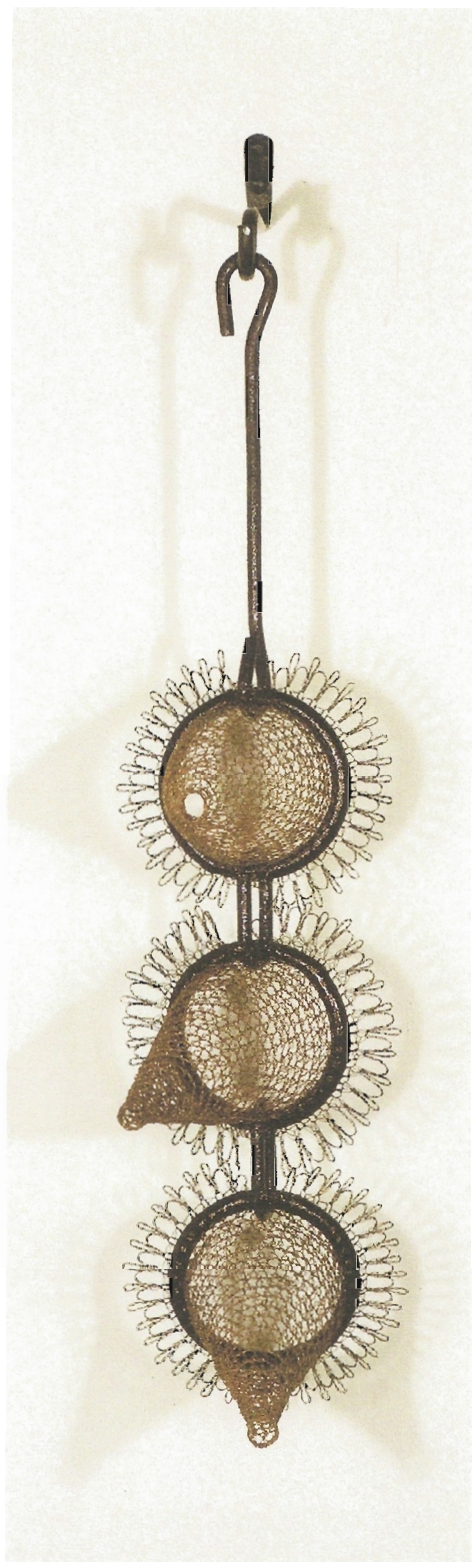
◆ **Tracy Krumm; *Rolled Squares***; crocheted and fabricated metal; brass and nickel wire, forged steel, found objects, patina, resin, lacquer; 19.5 x 28 x 9" (48 x 70 x 22.5cm); photo: courtesy of the artist.

◆ *Rolled Squares* (detail).

Tracy Krumm; *Cones (Three)*; crocheted and fabricated metal; bronze and nickel wire, forged steel, found objects, patina, resin, pigment, lacquer: 25 x 5.5 x 11" (62.5 x 13.5 x 27.5cm); photo: courtesy of the artist.

▼ *Cones (Three)* detail.





▲ Tracy Krumm; *Pair*; crocheted and fabricated metal; copper and brass wire, forged steel, found objects, patina, lacquer; 29 x 11 x 17" (72.5 x 27.5 x 42.5cm); photo: courtesy of the artist.